

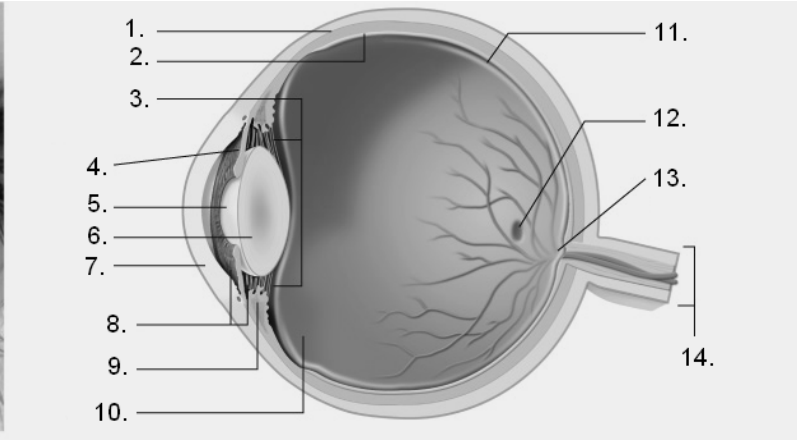
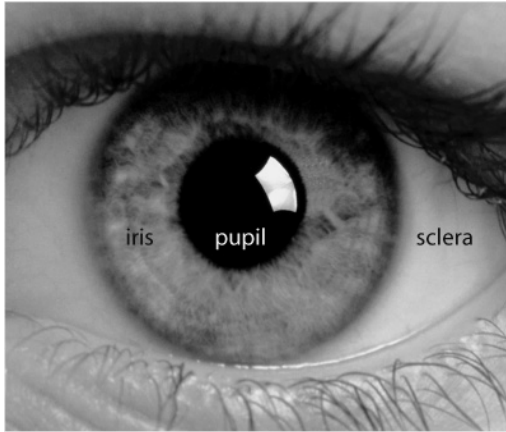
<b>CHAPTER 12</b>	<b>Major Sensory Receptors in the Human Body</b>	<b>BLM 12.1.1</b>
HANDOUT		

### Major Sensory Receptors in the Human Body

Category and type of receptor	Examples of receptor	Stimulus
<b>Photoreceptors</b>		
vision	rods and cones in the eye	visible light
<b>Chemoreceptors</b>		
taste	taste buds on the tongue	food particles in saliva
smell	olfactory receptors in the nose	odour molecules
internal senses	osmoreceptors in the hypothalamus	low blood volume
	receptors in the carotid artery and aorta	blood pH
<b>Mechanoreceptors</b>		
touch/pressure/pain	receptors in the skin	mechanical pressure
hearing	hair cells in the inner ear	sound waves
balance	hair cells in the inner ear	fluid movement
body position	proprioceptors in the muscles and tendons, and at the joints	muscle contraction, stretching, and movement
<b>Thermoreceptors</b>		
temperature	heat and cold receptors in the skin	change in radiant energy

# The Human Eye

Label the following diagram.



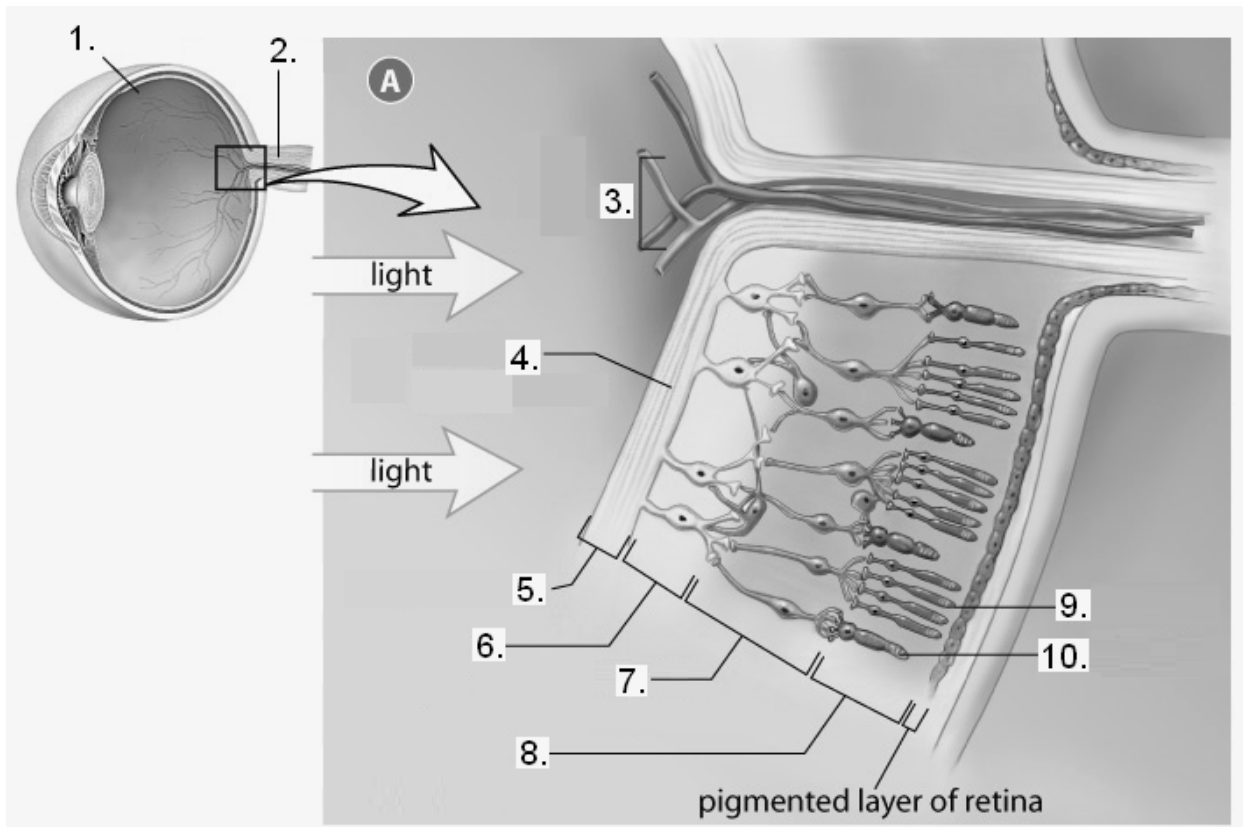
- 1. \_\_\_\_\_
- 2. \_\_\_\_\_
- 3. \_\_\_\_\_
- 4. \_\_\_\_\_
- 5. \_\_\_\_\_
- 6. \_\_\_\_\_
- 7. \_\_\_\_\_
- 8. \_\_\_\_\_
- 9. \_\_\_\_\_
- 10. \_\_\_\_\_
- 11. \_\_\_\_\_
- 12. \_\_\_\_\_
- 13. \_\_\_\_\_
- 14. \_\_\_\_\_

<b>CHAPTER 12</b>	<b>The Human Eye (cont'd)</b>	<b>BLM 12.2.1</b>
HANDOUT		

Fill in the table below. Describe the function of each listed structure.

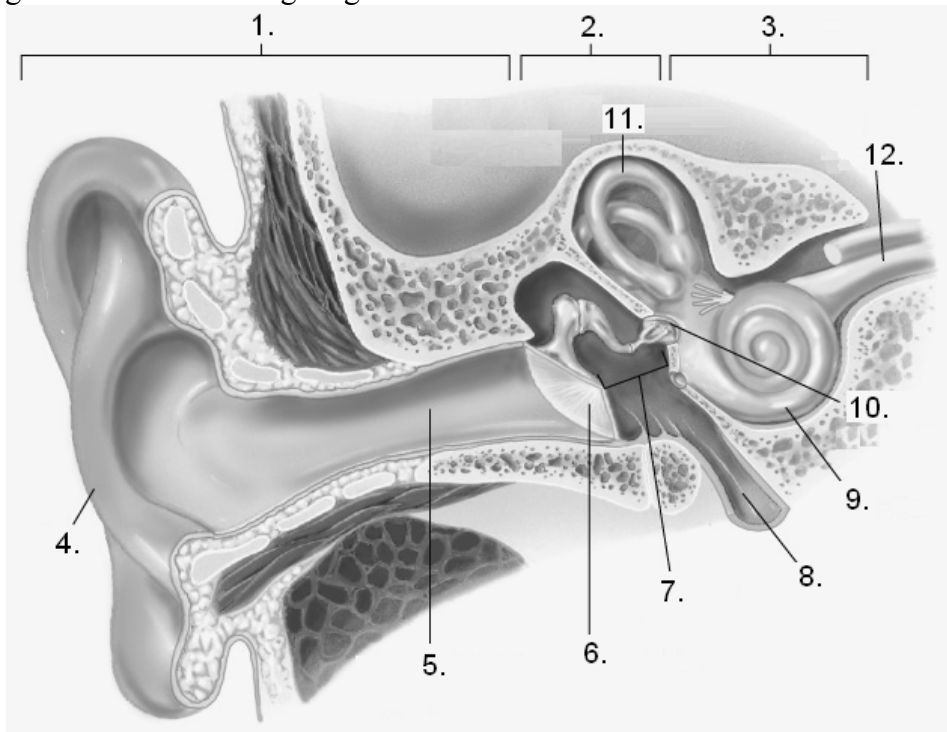
Structure	Function
<b>External layer (Sclera)</b>	
sides and back of sclera	
cornea	
<b>Intermediate layer (Choroid)</b>	
sides and back of choroids	
iris	
pupil	
ciliary muscles	
<b>Internal layer (Retina)</b>	
rods	
cones	
fovea centralis	
<b>Other</b>	
lens	
humours	
optic nerve	

Label 1 through 10 on the following diagram.



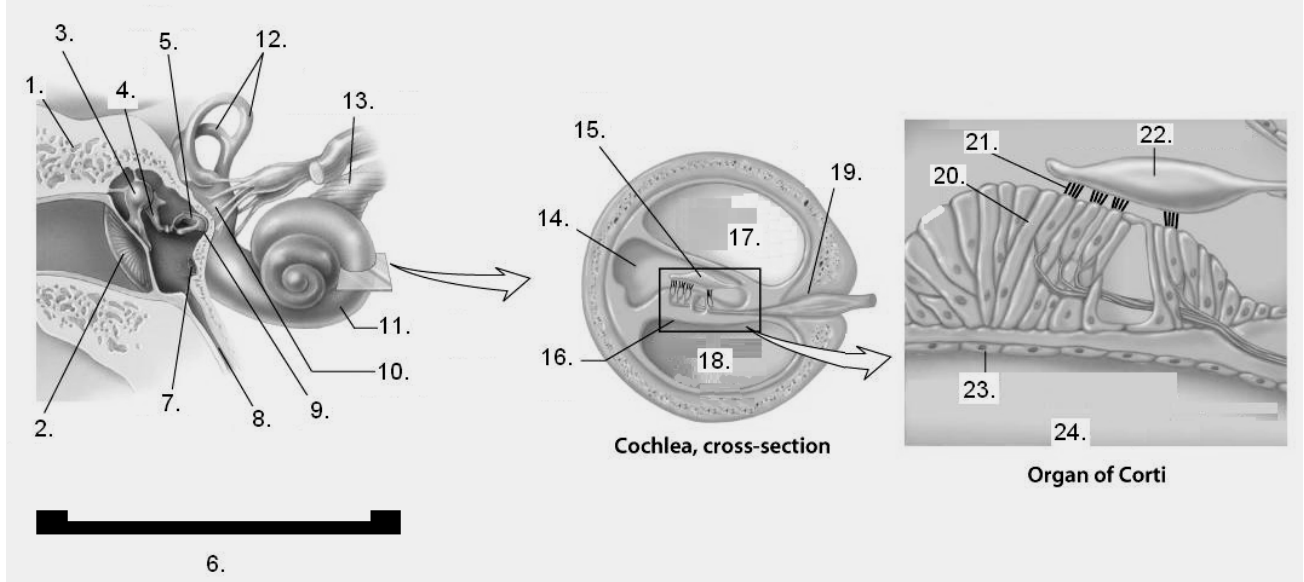
1. \_\_\_\_\_
2. \_\_\_\_\_
3. \_\_\_\_\_
4. \_\_\_\_\_
5. \_\_\_\_\_
6. \_\_\_\_\_
7. \_\_\_\_\_
8. \_\_\_\_\_
9. \_\_\_\_\_
10. \_\_\_\_\_

Label 1 through 12 on the following diagram.



1. \_\_\_\_\_
2. \_\_\_\_\_
3. \_\_\_\_\_
4. \_\_\_\_\_
5. \_\_\_\_\_
6. \_\_\_\_\_
7. \_\_\_\_\_
8. \_\_\_\_\_
9. \_\_\_\_\_
10. \_\_\_\_\_
11. \_\_\_\_\_
12. \_\_\_\_\_

Label 1 through 24 on the following diagram.



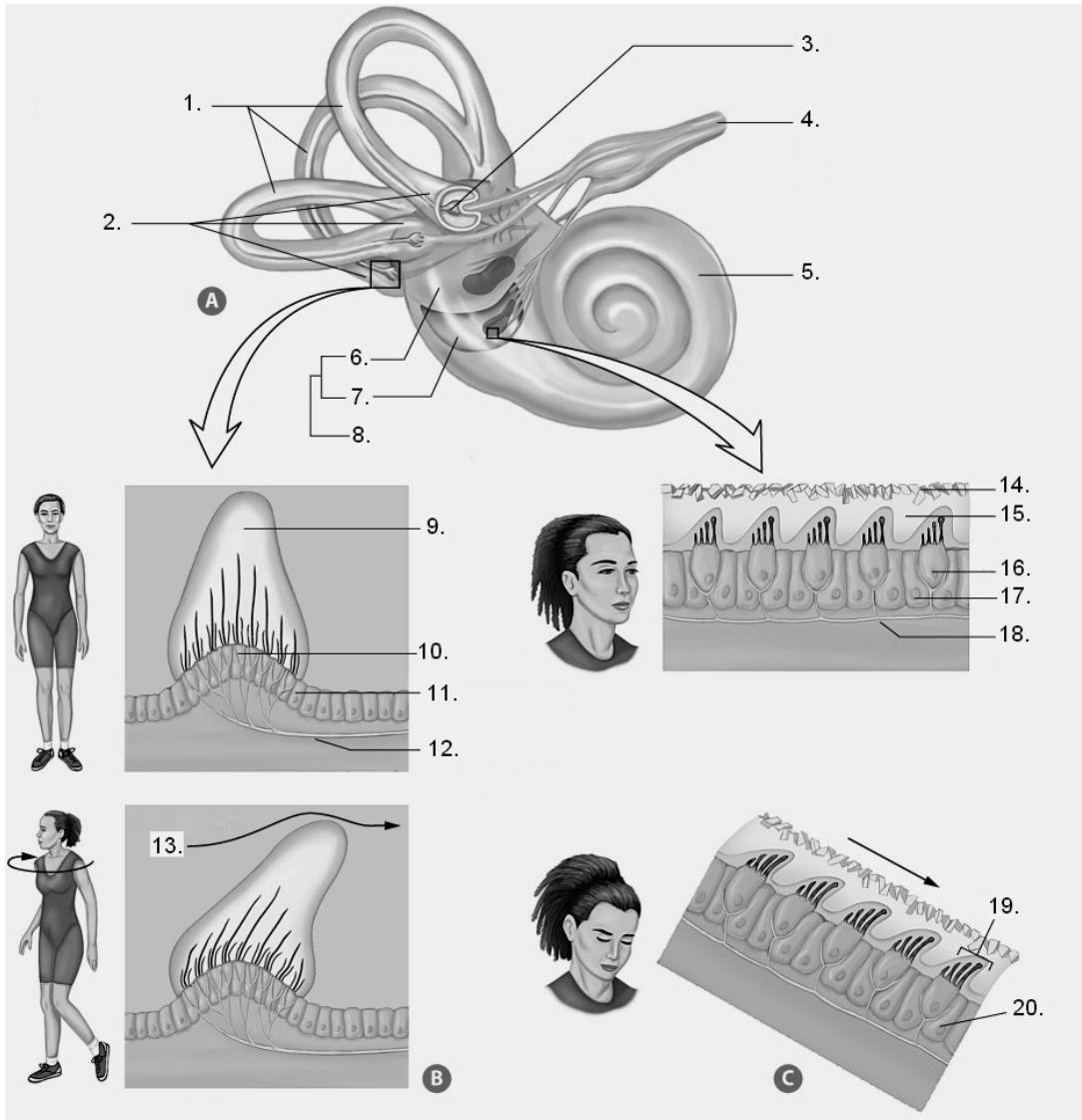
- 1. \_\_\_\_\_
- 2. \_\_\_\_\_
- 3. \_\_\_\_\_
- 4. \_\_\_\_\_
- 5. \_\_\_\_\_
- 6. \_\_\_\_\_
- 7. \_\_\_\_\_
- 8. \_\_\_\_\_
- 9. \_\_\_\_\_
- 10. \_\_\_\_\_
- 11. \_\_\_\_\_
- 12. \_\_\_\_\_

<b>CHAPTER 12</b>	<b>The Inner Ear and Cochlea</b> <b>(cont'd)</b>	<b>BLM 12.3.2</b>
HANDOUT		

- 13. \_\_\_\_\_
- 14. \_\_\_\_\_
- 15. \_\_\_\_\_
- 16. \_\_\_\_\_
- 17. \_\_\_\_\_
- 18. \_\_\_\_\_
- 19. \_\_\_\_\_
- 20. \_\_\_\_\_
- 21. \_\_\_\_\_
- 22. \_\_\_\_\_
- 23. \_\_\_\_\_
- 24. \_\_\_\_\_

# Balancing Act

Label 1 through 20 on the following diagram.



- |     |       |     |       |
|-----|-------|-----|-------|
| 1.  | _____ | 11. | _____ |
| 2.  | _____ | 12. | _____ |
| 3.  | _____ | 13. | _____ |
| 4.  | _____ | 14. | _____ |
| 5.  | _____ | 15. | _____ |
| 6.  | _____ | 16. | _____ |
| 7.  | _____ | 17. | _____ |
| 8.  | _____ | 18. | _____ |
| 9.  | _____ | 19. | _____ |
| 10. | _____ | 20. | _____ |